



The New G3 - A joy to own and ride

The award winning automotive designed lightweight Electric Bike



Third Generation G3 Enhancements

Proprietary light pipe Daytime running lights (DRL) for high visibility
Battery life extended by 25% to 50 mile depending on pedal input
Rotary grip shift power boost and DRL mode selection.

BOTH PORTABLE AND STOWABLE – PACKS AWAY FOR EASE OF TRANSPORT



Created by Richard Thorpe from McLaren Cars Karbon Kenetics Gocycle G3 E-Bike sets a new standard for stylish and highly capable urban transportation.

Beneath its sleek appearance lies a wealth of London engineered innovation in advanced technology and modular design.

To name just a few - Daytime running lights as standard. Formula 1 style clip-on side mounting wheels
Predictive Gear selection with rotary Grip power boost and DRL mode selection.

Bike Electric Limited

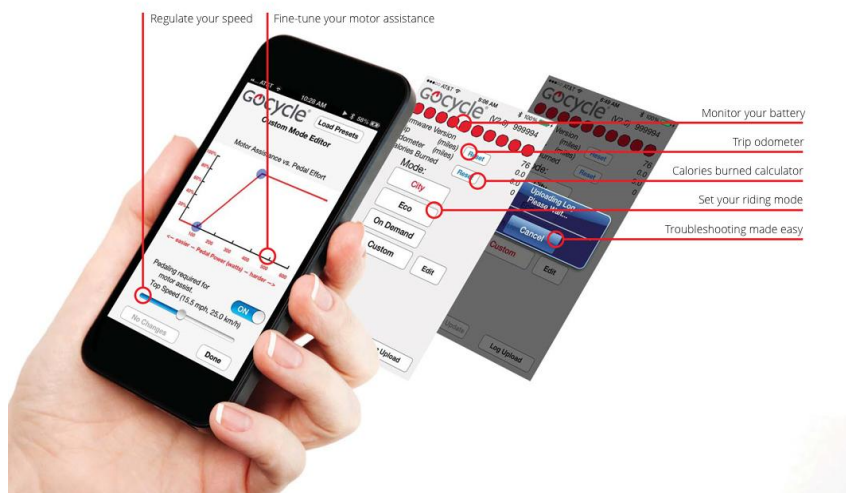
12 Brownfields, Welwyn Garden City AL7 1AN Phone : 0800 773 4921

Email: sales@bikeelectric.co.uk

Web: www.bikeelectric.co.uk



THE FUTURE IS NOW BLUETOOTH ENABLED POWER SETTINGS BLUETOOTH IMMOBILISED - MORE SECURE



The G3 – No Compromises

- **Incredibly light at 16.3 kg** - So light you can sling it on your shoulder
- **Stowable** – Easily packs away for private and public transit or storage
- **Powerful micro motor** – 2X the power-to-weight ratio of other e-bikes.
- **3-speed hub gear shift** – Predictive Electronic from buttons on handlebars
- **Integrated dash display** – Drive mode, gear selection, speed and battery level
- **On-demand Power Button** – Ideal for crossing junctions and uphill climbs
- **Wheels simply un-clip** - Facilitates packing away for ease of transit
- **Rear suspension** – The 25 mm travel absorbs the harsh roadside bumps
- **Remotely immobilised** - with the plus of remote tracking for locating
- **On Board Computer** - Toggles via Smart phone or handlebar buttons
- **Battery integrated into frame** – Li-Ion 10.75Ah for 40 mile range
- **Remotely programmable** - Power curve, kick in PAS speed and limit
- **Torque based PAS** - Kicks in quick when you need it on the flat
- **Invisible Chain** – Self tensioning, sealed and lubricated for life
- **Hydraulic Disc Brakes** – Front and Rear for great stopping power
- **Riding Modes** - Four selectable power modes at the touch of a button.
- **Great colour options:** Stealth black, Pure white or Gunmetal grey



Model G3 Specifications	
Frame Colour	So White, Gunmetal Grey, Stealth Black, Signature Electric Blue
PitstopWheel®	Proprietary Hexlock detachable clip-off side-mounted wheels
Motor Drive Control	Pedal Torque Sensing
Daytime Running Light	Proprietary Light Pipe Technology front and rear, 4 running modes
Smart Device Connectivity	GocycleConnect® App via wireless Bluetooth®
Riding Modes	City, Eco, On-Demand, Custom. Multiple, programmable via dashboard functions or GocycleConnect App
Electric Drive Speed	25km/h (15.5 mph) with Boost option
Range	Now up to 80km (50 miles), depending on pedal input
Front wheel Motor	Gocycle proprietary motor gear drive 250 watt continuous
Battery	Proprietary In Frame Lithium ion, 13.5 Ah, 22V, 300Wh
Charging	5.5-hour full recharge
Handlebar Display	Integrated - displays fuel gauge, speed, gear and efficiency
Shifting	Gocycle electronic Predictive Shifting™
Transmission	Patented Cleandrive® Shimano Nexus 3-speed
Gear Inches / Development	1st=39.1 in, 2nd=53.3 in, 3rd=72.5 in / 1 st =3.1m 2 nd =4.3m 3 rd =5.8m
On-demand Power	Via ergonomic grip rotary control
Brakes	Hydraulic disk, front and rear
Tyres	Gocycle Performance 20" x 1.75 Tyre (406-50)
Front Motor Fork	Gocycle proprietary, single-sided, 6061 T6, fixed
Rear Suspension	Gocycle Lockshock™ 25mm (1 in) travel
Saddle	Velo D2 Comfort
Frame Size and fit	Universal Vgonomic™
Handlebar stem	Enhanced cable routing. Quick-folding .Reach and height adjustment
Wheel base	1065mm (42 in)
Compacted meets British Rail restrictions	New Docking Station - 600mm x 760mm x 300mm (with folding pedals)
Approximate weight	16.3kg (35.9 lbs)
Maximum rider weight	100kg (220 lbs), including clothing and luggage***

Technical specifications subject to change without notice. This product has been designed with a maximum recommended weight limit of 100kg (220lbs) for the rider, clothing and all luggage, and is intended for use on paved roads. For rider and luggage weight 100-115kg (220-250lbs): riding style, road condition, tire pressures and luggage position may reduce product service life. Luggage weight should not exceed 10% of total rider and luggage weight. Never exceed rider and luggage weight of 115kg (250lbs) at any time. Exceeding this limit will void all warranties and may result in the product being unsafe for operation.